

L.E.D. is the New Standard in Lighting. Lumens³ is the New Standard in L.E.D. GROW LIGHTING.

GROW LIGHTING & AGRICULTURAL SYSTEMS WITH MULTI-SERVO / STEPPER ASSISTED LED LIGHTING TECHNOLOGY (S.A.L.T.)™.

Simplify your complex Greenhouse, Hydroponics, Aeroponics, Aquaponics, or other indoor and outdoor horticultural-agricultural operations with ONE system that controls grow lighting, all sensors, and all your equipment and systems in one system with the future built in.

EXCLUSIVE PATENTED ALL-IN-ONE INFINITE SENSOR INTERFACE ALLOWS YOU TO ADD ANY SENSOR YOU MIGHT NEED FOR YOUR COMPLEX OPERATIONS. NOW YOU CAN MEASURE, CONTROL, ANALYZE, STORE DATA, & MONITOR EVERYTHING FOR DIFFERENT STAGES OF PLANT DEVELOPMENT WITH ONE SYSTEM.

AVAILABLE SENSORS*:

*Light Irradiance; RGB Color Sensors; Light Intensity;

*pH; TDS; EC/CF; Conductivity-Salts-Salinity;

*Soil Moisture; Humidity; Temperature (Indoor & Outdoor); Water Quality; Water Level; Drainage Sensors; Flow of Water or Nutrients; Water Leak Sensors;

*Weather Conditions & Reports (Including Wind Speed, Wind Direction, Barometric Pressure, Precipitation);

*Leaf Color and Leaf Wetness Sensors;

Distance Sensors to Monitor Plant Height-Growth; Bacteria Monitoring;

*Gas Sensors: (including Chlorine, Oxygen, Ozone, CO₂, Hydrogen, Carbon, Odor Monitoring, Air Quality, Fire & Smoke Sensors).

*Nutrient Levels: (Nitrogen, Phosphorus, Potassium, Calcium, Magnesium, Sulfur, Boron, Copper, Iron, Chloride, Manganese, Molybdenum, Zinc), etc.

*Other Sensors as might be needed and as they become available.



L.E.D. is the New Standard in Lighting. Lumens³ is the New Standard in L.E.D. GROW LIGHTING.

FINALLY, YOU CAN NOW CONTROL THE FOLLOWING EQUIPMENT & SYSTEMS WITH ONE GROW LIGHTING & CONTROL SYSTEM THAT HAS THE FOLLOWING CAPABILITIES:

*RED and BLUE Multicolor RGB Grow Light LEDs with programmable, automatic, and manual date-time functions and controls for enhancing vegetative growth and budding.

*Proprietary logic that allows you to set and use any array of sensors and trigger levels for turning external devices on and off, to control external devices, and for reporting and data logging purposes.

*Reporting, data storage, & control functions to automatically and manually operate every piece of equipment for your greenhouse, hydroponics, aeroponics, aquaponics, and other systems including systems that are designed for outdoor crops, vineyards, and orchards through computers, smartphones and hand held devices.

*All Uriel LED Grow Lighting devices are wirelessly connected via a mesh network to the growers' smart mobile device that empowers those devices with smart logic that can detect and resolve problems remotely. The system allows for the grower to configure set points that automatically send alerts for critical grow room events. Uriel Grow Light systems are totally wireless systems that deliver the hydroponics grower complete wireless control of the grow room atmospheric conditions, with user inputted sensor thresholds that if exceeded, alert or take action as required.



URIEL GROW LIGHTING CONTROLLABLE EQUIPMENT & SYSTEMS:

FURTHER EXCLUSIVE SYSTEMS & FEATURES:

ENHANCED LED GROW LIGHTING:

- *Enhanced Vegetative & Budding RED/BLUE Grow Light Control;
- *Light Irradiance & Sleep Cycling Control.

MOISTURE/WATER QUALITY & CONTROL:

- *Air/Mist Control;
- *Water Reservoir Irrigation and Soil Moisture Monitoring;
- *Water Quality Control & Leak Detection;
- *Irrigation & Water-Nutrient Recirculation Control;
- *Flow Pump-Water Pump Control;
- *Droppers/Drip Irrigation Control;
- *Humidity Control Systems.

FERTILIZER, NUTRIENT, HORMONE CONTROL:

- *Fertilizer & Nutrient Injection Devices & Systems;
- *Plant Booster Injection Control;
- *Vitamin & Hormone Injection Control.

SYSTEMS:

- *Electrical Feed Control;
- *Fan Control;
- *Temperature/Thermostat Control for Air Conditioning
- *Heat-Frost Control;
- *Dispensing Control of pH Reagents;
- *SALTS/SALINITY Conductivity Control Systems;
- *Oxygen Pump Control;
- *Ozone Control;
- *CO2 Regulation Systems;
- *Automatic dosing;
- *Micro-processor contains all of the user's settings, reads the attached sensors and then turns equipment on or off automatically.
- *Drainage for Heaters, Air Conditioning, Humidifiers, and Dehumidifiers; Pump Control;
- *Timer Control Functions;
- *Programmed, Automatic & Manual Control;
- *ON/OFF System Function Cycling;
- *Programmable Alerts, Status & Control;
- *Data & Status Reports concerning operations.

SPECIALIZED SENSORS:

- *Color sensors for monitoring slowly changing events like algae blooms or leaf death.
- *Color sensors for determining light absorption by looking at light that shines through an obstacle such as a leaf or water.
- *Soil Quality Control & Monitoring
- *Fertilizer/nutrient strength and quality monitoring.

For more information on any of
our products or services please
visit us on the Web at:
www.lumenscubed.com



Uriel Corporation®

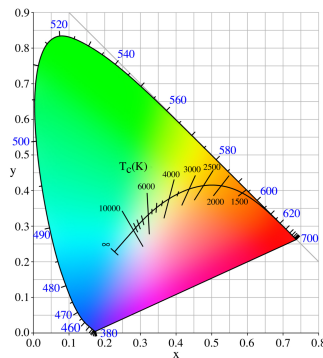
Page Hof F€

URIEL GROW LIGHTING CONTROLLABLE EQUIPMENT & SYSTEMS FOR YOUR AGRICULTURAL OPERATIONS:

FURTHER EXCLUSIVE SYSTEMS & FEATURES:

---LED Lighting w/Directable Communications & Control Technology™
---Custom Application, Custom Sensor Enabled LED Lighting™

---Grow Lighting for Outdoor Crops, Orchards, Greenhouses, Indoor Plant Growth, Aeroponics, Aquaponics, and for Hydroponic Farming™



For more information on any of our products or services please visit us on the Web at:

www.lumenscubed.com

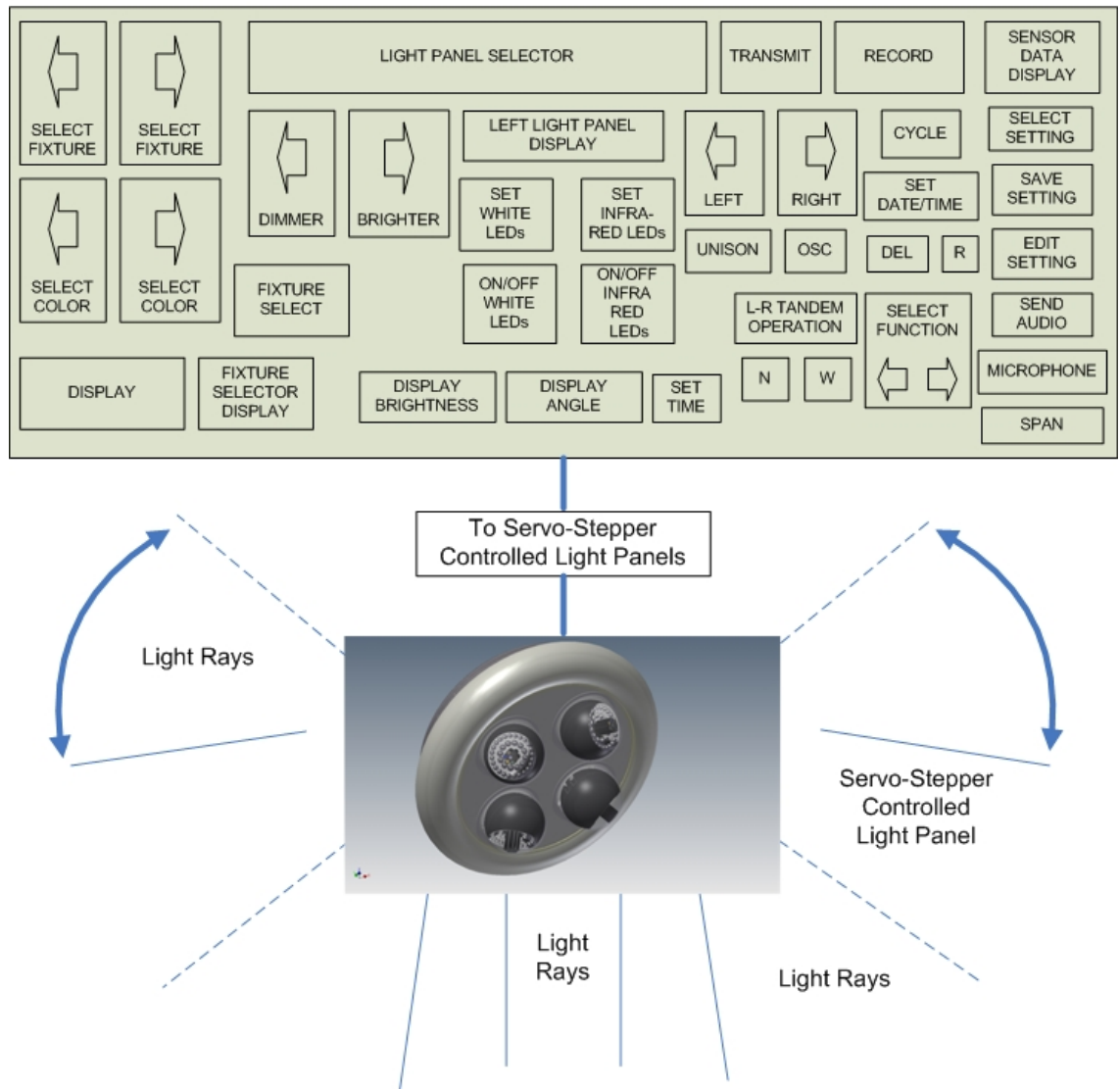


Uriel Corporation®

Page 1 of F6

Exclusive Patented Lumens³ LED Control Systems:

SYSTEM CONTROL PANEL WITH MULTI-LIGHT PANEL ROTATABLE LIGHT FIXTURE*



For more information on any of
our products or services please
visit us on the Web at:
www.lumenscubed.com

*The Control Panel is designed specifically for your configured application and your specific light unit, which may have a different number of light panels. Specifications and features may vary from the description above. The features shown in the controller above are only a sample of over 122 available features. The Control Panels are designed to work with your specific version of Uriel Corporation's S.A.L.T.TM LED Lighting Systems.



Other Exclusive Lumens³ Features:

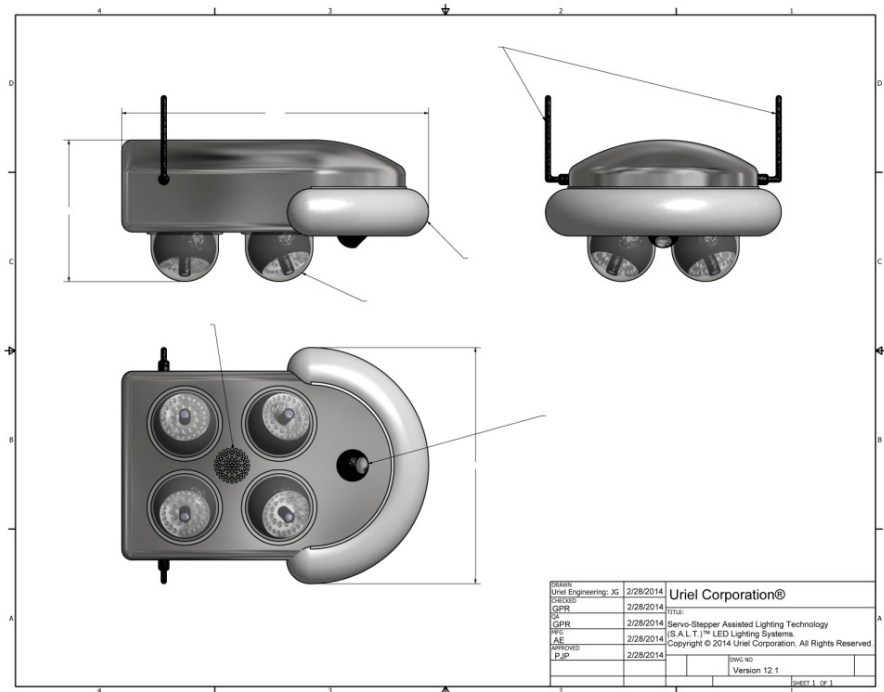
Lighting Systems Technology with WIFI.



- Lighting-WIFI, Data, Communications Capability.

- Lumens³ is the efficient, cost effective option to deliver WIFI throughout your agricultural operations.

Various Configurations of Rotatable LED Light Panels are available Per Unit. (*Actual Enclosures / Lens Filters may have a different appearance.)



For more information on any of our products or services please visit us on the Web at: www.lumenscubed.com



Uriel Corporation®

Page 1 of F6

Other Exclusive Lumens³ Features:

S.A.L.T.™



Servo-Stepper Assisted Lighting Technology
(S.A.L.T.)™ LED Lighting Systems.
Copyright © 2014, Uriel Corporation
All Rights Reserved.
www.lumenscubed.com
www.urielcorporation.com

| | |
|---------|--|
| 9500° K | Clear Blue Sky |
| 7000° K | Overcast Sky |
| 5500° K | Sun at Noon |
| 3750° K | Cool Fluorescent |
| 3000° K | Halogen |
| 2700° K | 100W Incandescent |
| 2250° K | 40W Incandescent / Warm Fluorescent |
| 1800° K | High Pressure Sodium |
| 1500° K | Candle Light |

URIEL LED Grow Lighting Technology is designed to provide all types of Kelvin Temperatures, especially in the Blue and Red Spectrum for enhanced budding and vegetative growth.



For more information on any of our products or services please visit us on the Web at:
www.lumenscubed.com



Uriel Corporation®

Page 1 of 6

PATENTED EXCLUSIVE (S.A.L.T.)™ LED SYSTEMS further include:

FURTHER EXCLUSIVE SYSTEMS:

VEHICULAR MULTI-SERVO /
STEPPER ASSISTED LIGHTING
TECHNOLOGY (S.A.L.T.)™ LED
SYSTEMS

INDOOR MULTI-SERVO /
STEPPER ASSISTED LIGHTING
TECHNOLOGY (S.A.L.T.)™ LED
SYSTEMS

SPECIAL PURPOSE MULTI-
SERVO / STEPPER ASSISTED
LIGHTING TECHNOLOGY
(S.A.L.T.)™ LED SYSTEMS

EXCLUSIVE LIGHTING,
SENSING, & MONITORING.

Lumens[®] is a wholly owned Lighting
and Sensing Marketing & Sales
Subsidiary of Uriel Corporation.

- Rotation of Panels:
Multiple rotational modes.
- Intensity:
Multiple lumen ranges available;
Manual & Automatic brightness control also maintains system brightness at LED End of Life Cycle.
- Sensors:
Multiple Grow Lighting alert sensors; Manual and automatic operational control capability.
- Communication:
Audio, Video, & Data Bidirectional Communication;
Password-enabled Communication.
- Next Generation LED Light Source Technology:
Energy saving; Long Life LED time rated up to 130,000+ hours or ~30 years+;
Reduced maintenance; Multiple power source capability;
Programmable & manual operation.
- Auto-Switching Solar Powered/Battery Backup Option --- AC to DC Power Supply.
Solar Powered Option (with battery energy storage); AC Charging on cloudy days.
- Thermal Shock Avoidance Technology™:
Exclusive Patented Heating/Cooling Cycling Technology To Extend Operating Life
- Options:
Automatic & manual rotation modes; cameras; microphones; speakers; displays;
sensor trigger array interface(s).



Uriel Corporation®

L.E.D. is the New Standard in Lighting. Lumens³ is the New Standard in L.E.D.

SERVO / STEPPER ASSISTED LIGHTING TECHNOLOGY
(S.A.L.T.)TM PRODUCT FAMILIES:*



*Also available with Black Powder Coating.



Uriel Corporation®

Page J of F€

About Uriel Corporation.



Uriel Corporation was established as a R&D Engineering Think Tank in 1984. Uriel Corporation's PATENTED, EXCLUSIVE MULTI-SERVO / STEPPER ASSISTED LIGHTING TECHNOLOGY (S.A.L.T.)™ LED SYSTEMS, THREAT MONITORING™ and SENSOR MONITORING™, and AREA SURVEILLANCE REPORTING™ Sensor Technology Options are the result of many years of Research and Development and Engineering undertaken by Uriel Corporation focusing on providing the world's new standard in lighting.

The Uriel Corporation LUMENS³ (LUMENS CUBED) marketing division is a marketing extension of Uriel Corporation that markets and sells Uriel Corporation's PATENTED, EXCLUSIVE LED Multi-Servo/Stepper Assisted Lighting Technology (S.A.L.T.)™ LED Systems.

Patents are Issued and Pending.

SERVICES AVAILABLE:

Technical Support
Installation and Setup
Maintenance
Hardware Support
Warranty

- Contact a Uriel Corporation Quotation Engineer today to assist you in developing your custom build-to-order LED Lighting System.

- For more information on any of our products or services please visit us on the Web at: www.lumenscubed.com

For fastest service please email all inquiries and purchase orders to: sales@urielcorporation.com.

Uriel Corporation Headquarters
One Westbrook Corporate Center, Suite 300
Westchester, IL 60154-5709
1 (708) 598-7314, sales@urielcorporation.com

Parent Company: www.urielcorporation.com
Lighting Systems Sales & Marketing Domains:
www.lumenscubed.com, www.lumens3.com

Uriel Corporation and Lumens³ are
Registered Trademarks of Uriel Corporation
Copyright © 2014, All Rights Reserved.
Template/Product Configuration Version 12.2



Uriel Corporation®

Page F€ of F€